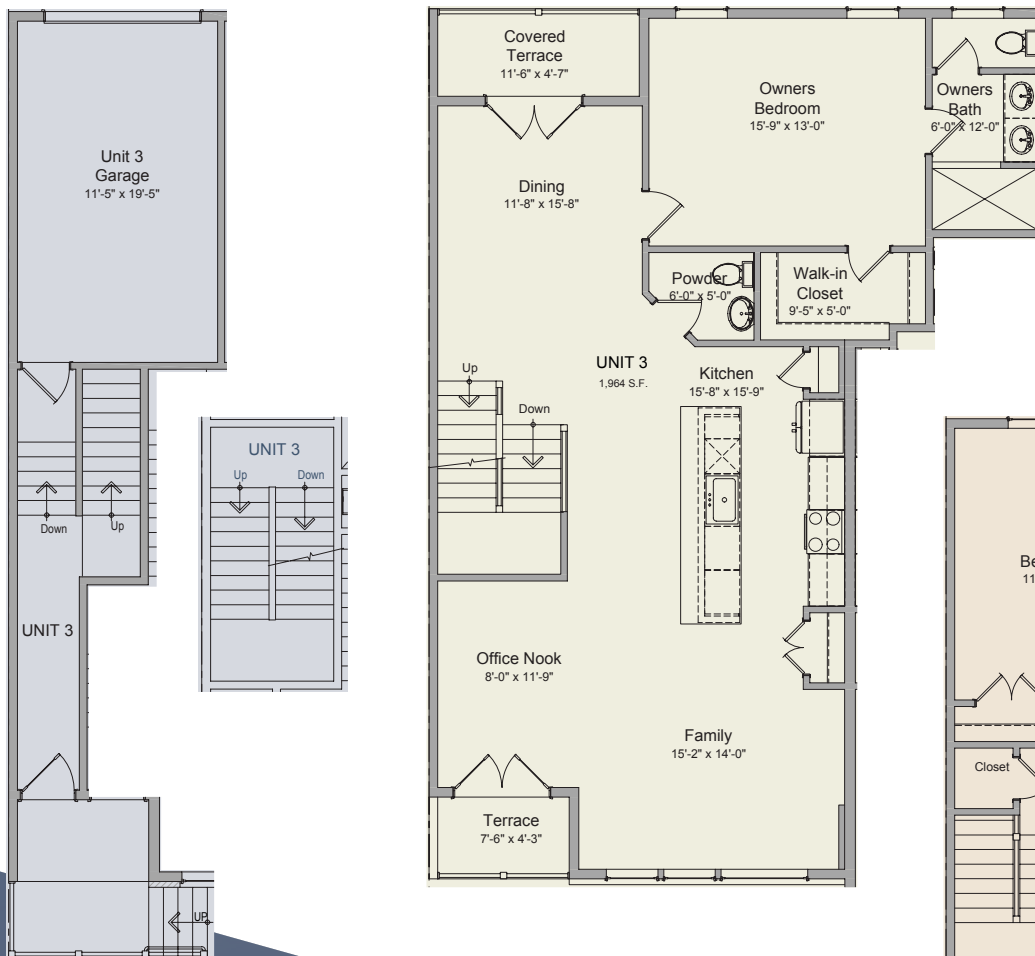


2,222 SQ FT | 3 BR 2.5 BA

# ASPEN

Located on the third and fourth floors, this remarkable plan offers two inviting terraces making the most of your outdoor surroundings, and the convenience of a main level master bedroom complete with a full bath and a walk-in closet. Two well-appointed bedrooms on the second level ensure privacy and comfort, while the laundry area on this level adds convenience to your daily routine. The kitchen boasts a stunning 12-foot island, which serves as a focal point for both meal preparation and casual dining.

*Main Floor*



*Upper Floor*

